

PixelMapUK.co.uk gives access to a variety of different maps. The bitmap image can be annotated with text, images and also GPS tracks although the resolution of 1 kilometre per pixel may not seem very useful, when looking at the whole of the UK it is perfectly adequate.

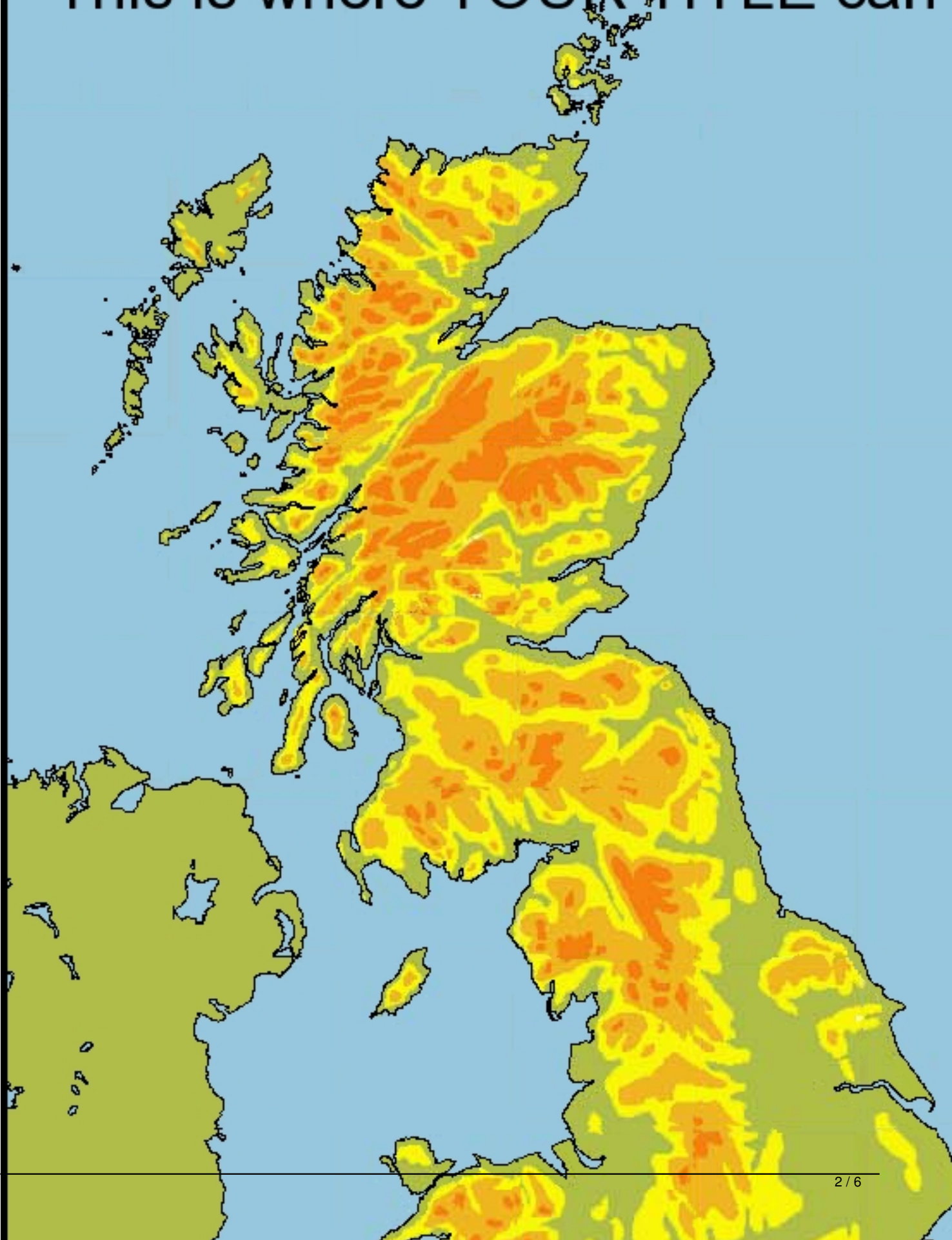
### [PDF maps of the UK](#)

## The image map

The map image is a jpeg compressed bitmap of 700 x 1102 pixels. Each pixel therefore represents 1 sq km on the ground. The bottom left hand corner is equivalent to the OSGB false origin of the National Grid.

**Click on the image to make your own map!.**

This is where YOUR TITLE can



By clicking the **Reset the MapName** button the title of the map will be reset to **Enter a name and it will appear here!**

can be easily changed by typing in what you want in the box above the **Reset the MapName** button and then clicking the button. As you explore the other bitmap maps the title you entered appears at the top of them all, you can of course change it at any time.

The map can be printed onto A4/letter size paper after saving the image.

In IE (Microsoft Internet Explorer) press the right mouse button when the cursor is over the map and select '*Save Picture As ..*' to save where you can find it.

Then after you find the file using *My Computer* double click on it to bring it up in *Windows Picture and Fax Viewer*

. From here you can send it too your colour printer. It looks good on A4 size paper and is acceptable as a wall poster when printed on A3.

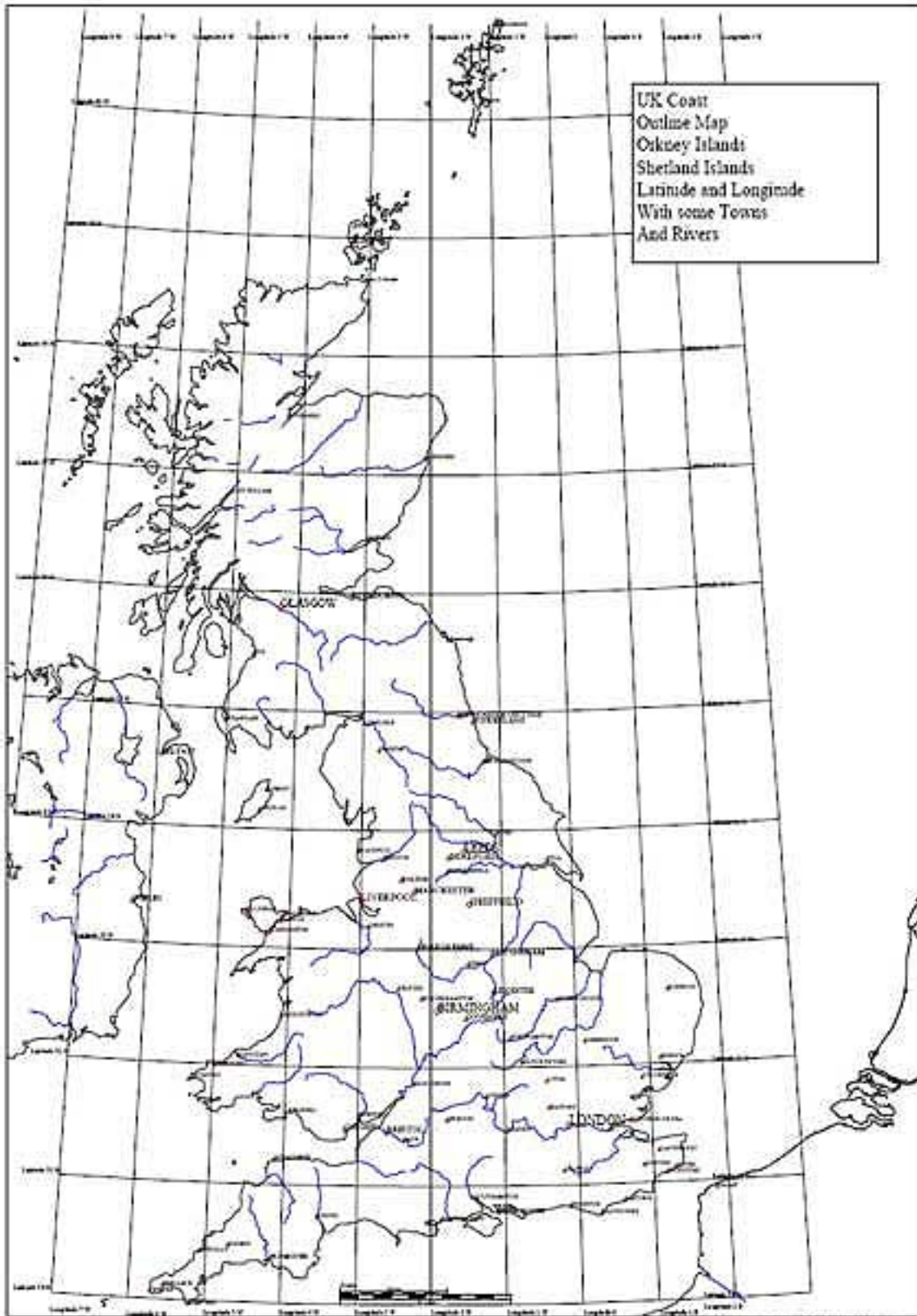
Have fun!

## Free Coastal outline maps of the UK as A3/A4 PDF documents



[UK Coastal Outline with Latitude and Longitude, some Towns and Rivers.](#)





[UK Coastal Outline including the Shetland and Orkney Islands with Latitude and Longitude.](#)

**These A3 PDF maps are available in the following versions:**

[UK Coastal Outline](#)

[Coastal Outline and the Shetland and Orkney Islands](#)

[With Towns](#)

[With Towns](#)

[With Rivers](#)

[With Rivers](#)

[With Towns and Rivers](#)    [With Towns and Rivers](#)  
[With Latitude and Longitude](#)    [With Latitude and Longitude](#)  
[With Latitude and Longitude and Towns](#)    [With Latitude and Longitude and Towns](#)  
[With Latitude and Longitude and Rivers](#)    [With Latitude and Longitude and Rivers](#)  
[With Latitude and Longitude and Towns and Rivers](#)    [With Latitude and Longitude and  
Towns and Rivers](#)  
[With OSGB National Grid](#)    [With OSGB National Grid](#)  
[With OSGB National Grid and Towns](#)    [With OSGB National Grid and Towns](#)  
[With OSGB National Grid and Rivers](#)    [With OSGB National Grid and Rivers](#)  
[With OSGB National Grid and Towns and Rivers](#)    [With OSGB National Grid and Towns  
and Rivers](#)